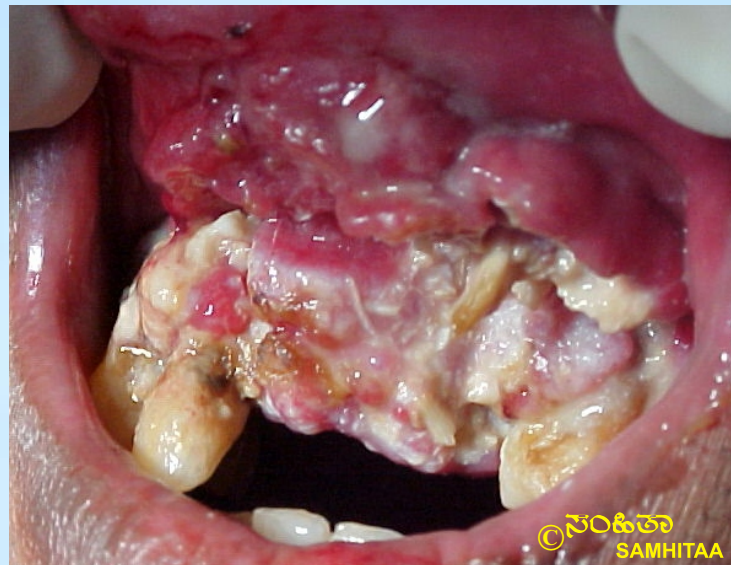


Tobacco and Gutkha Industry will not show you this.....



Cancer seen after using gutka for 8 years



Mouth cancer in a 45 year old using chewing tobacco

Get yourself checked for mouth cancer if you are using tobacco or gutkha

ಸಂಹಿತಾ
SAMHITAA

Center for Mouth Diseases and Orofacial Pain

891, First floor, West of Chord Road, Mahalakshmpuram, Second stage, Bengaluru 500086 (Opp. Pristine Hospital)

Please call 9448786598, or visit our website at www.samhithaa.com for more information.